



Cylinder Head Components

Manley Severe Duty Series® performance valves are a great choice for your high-performance or race engine.

Severe Duty Series® valves are made of superior materials, are fully machined and swirl polished, and are available with either undercut "Pro Flo" stems or straight stems.



Valves - Severe Duty Series®

Part No.	Valve Material	Valve Length	Valve Diameter	Stem Size	Description	Price
<i>Intake Valve</i>						
MAN-IV	NK- 844 S/S	6.500"	2.25"	11/32"	Fully machined, swirl polished, and are available with either undercut "Pro Flo" stems or straight stems.	\$29.00 ea.
<i>Exhaust Valve</i>						
MAN-EV	XH-428	6.500"	1.80"	11/32"	Fully machined, swirl polished, and are available with either undercut "Pro Flo" stems or straight stems.	\$33.00 ea.

Manley titanium valves are micro polished, rendering a jewel-like surface finish. This process eliminates potential stress risers and increases fatigue strength.

All Manley valves must pass our rigorous final inspection strict quality control enables us to maintain critical tolerances.



Valves - "HT" Titanium Valves

Part No.	Valve Material	Valve Length	Valve Diameter	Stem Size	Description	Price
<i>Intake Valve</i>						
MAN-IVT	Titanium	6.500"	2.25"	11/32"	"HT" alloy is a great solution for applications where valve seat recession exists. The elevated hardness of the "HT" alloy, combined with its terrific mechanical properties, make it the ultimate intake valve.	\$108.00 ea.
<i>Exhaust Valve</i>						
MAN-EVT	Titanium	6.500"	1.80"	11/32"	"HT" exhaust valves can be used in high compression drag race applications and high compression oval track motors running alcohol.	\$108.00 ea.

DRAG RACE VALVE SPRINGS

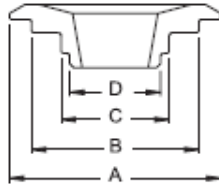


You can't beat Manley's NexTek® valve springs for winning performance, long-term reliability, and ultimate value! Knowledgeable engine builders will tell you that valve springs are among the most critically important components of any engine.

Valve Springs - NexTek® Series

Part No.	O.D.	L.D.	Spring Rate (lbs. / in.)	Coil Bind Height (in)	Description	Damper Spring Included	Valve Spring Style	Coated	Quantity	Price
<i>Double</i>										
MAN-VSD	1.640	.860	647	1.070	Super Gas, Super Comp., Big Block Bracket	no	Standard	no	Sold as a set of 16	\$335.00
<i>Triple</i>										
MAN-VST447	1.677	.635	746	1.160	Super Stock, Pro Mod., Competition Eliminator	no	Standard	no	Sold as a set of 16	\$485.00
MAN-VST449	1.677	.632	720	1.142	Pro Stock, Fuel & Alcohol	no	Standard	no	Sold as a set of 16	\$608.00

LIGHTEN YOUR VALVETRAIN



Manley titanium valve spring retainers are a great way to lighten your valvetrain, in order to rev higher and make more power. These retainers are excellent for all types of racing, and are designed for valve stem locks with a 10 degree taper.

Valve Spring Retainers - Titanium

Part No.	Spring	Spring O.D	Height	Keeper Degree	Locks Included	Dimensions				Quantity	Price
						A	B	C	D		
<i>Double</i>											
MAN-DVSR	MAN-VSD	1.625"	Standard	10°	no	1.500"	1.175"	.850"		Sold as a set of 16	\$148.00
<i>Triple</i>											
MAN-TVSR447	MAN-VST447 MAN-VST449	1.660"	Standard	10°	no	1.500"	1.185"	.860"	.620"	Sold as a set of 16	\$148.00
MAN-TVSR449	MAN-VST447 MAN-VST449	1.660"	+.100"	10°	no	1.500"	1.185"	.860"	.620"	Sold as a set of 16	\$148.00

DESIGNED TO KEEP OIL
OUT OF THE COMBUSTION CHAMBER

Valve Stem Seals - Viton®



Part No.	Valve Stem (Dia)	Valve Seal Type	Valve Stem Material	Guide O.D.	Installed Seal O.D.	Use Cutter No.	Quantity	Price
MAN-VSS1	11/32"	Postive Stop	Viton®	0.500"	0.620"	41611	8 pcs.	\$32.75
MAN-VSS2	11/32"	Postive Stop	Viton®	0.530"	0.674"	41711	8 pcs.	\$32.75



Cylinder Head Components

Manley 10 degree machined valve locks are precision-crafted and machined from the highest quality steel alloy and titanium to suit your needs. The steel valve locks are heat-treated and feature a black oxide finish. The titanium valve locks are durable and lightweight.



10 Degree Machined Valve Locks

Part No.	Valve Stem Diameter	Lock Style	Installed Height	Groove Type	Lock Material	Recessed to accept a wear cap	Wgt. / Pr.	Quantity	Price
MAN-VL68	.3415"	10°	Standard	Conventional	Steel alloy	no	6.8 gms	Sold as a set of 16	\$62.50
MAN-VL61	.3415"	10°	Standard	Conventional	Steel alloy	yes	6.1 gms	Sold as a set of 16	\$62.50
MAN-VL56	.3415"	10°	.050" more	Conventional	Steel alloy	yes	5.6 gms	Sold as a set of 16	\$62.50

Manley valve spring cups protect your expensive aluminum heads from being galled by your high-pressure valve springs. They're quality-machined to a .062 in. or .035 in. thickness, from heat-treated steel that's finished with a corrosion-resistant black oxide finish. Manley valve spring cups are available in outside diameter spring cup styles.



O.D. Valve Spring Cups

Part No.	Locating Shoulder Type	Locator Material	Fits Spring O.D.	Cup O.D.	Cup I.D.	Wall Shoulder Height	Spring	Use Cutter Number	Quantity	Price
MAN-VSC121	Outside	Steel	1.625"	1.740"	.635"	.150"	MAN-VSD	141851	Sold as a set of 16	\$81.00
MAN-VSC128	Outside	Steel	1.625"	1.740"	.635"	.250"	MAN-VSD	141851	Sold as a set of 16	\$81.00
MAN-VSC371	Outside	Steel	1.660"	1.740"	.635"	.140"	MAN- VST447 MAN- VST449	141851	Sold as a set of 16	\$81.00



JESEL Comp Series Shaft Rockers are made out of strong 7000 series alloy aluminum to retain toughness at high engine temperatures, the Comp Series has no limitations as to spring rates and rpm. Each rocker assembly is built to order with a wide range of pivot points, ratios and offsets available. Even the new lightweight MoHawk rocker style is now available as an option in the Comp Series.

Shaft Rocker System - Competition Series

Competition Series Options

MoHawk Lightening Beam: • Stiffest, lightest rocker JESEL has ever produced • Increases spring life

Rocker Tail Profile: • Increases valve cover clearance • Decreases rocker weight

Needle Bearing Nose Roller: • Intended for use with high lift/high spring pressure applications • Prevents the roller from skidding and stalling across the valve tip • Decreases valve guide wear

Spring Clearance: • Increases retainer-to-rocker clearance • Ball mill machining leaves no sharp edges • Available for 1.515-1.650 pivot length rockers

Tool Steel Adjusters: • Direct replacement for our standard adjusters • Better impact and wear characteristics

Ball Adjusters: • Increases rocker arm strength by removing the adjuster cup counterbore in the rocker tail • Increases adjuster strength by moving cup end the pushrod • Operates with less friction than cup style adjusters

ARP Shaft Bolts: • Manufactured from ARP 2000 material • Recommended for high spring pressure applications • Bolt can be torqued to 35 ft/lbs

Shaft Rocker System - Pro Series



MoHawk
1.650 Pivot BB Rocker
Weight: 195g

JESEL's MoHawk rigid center beam rocker is the ultimate design incorporating stiffness, strength and lightweight into a single package.

Standard Shotpeen Finish

Benefits: Induces an even, compressive stress layer in the surface of the rocker body. Increases the resistance to fatigue failures. Adds compression strength and stress relieves rocker body.

Additional Option - Needle Roller

Benefits: Intended for use with high lift, high spring pressure applications. Prevents the roller from stalling and skidding across the valve tip.

Additional Option - Ball Adjuster

Benefits: Has less friction than cup type adjusters. Makes rocker arm stronger by increasing the adjuster thread area and eliminates counterbore area.

Jesel® Competition Series
Jesel® Pro Series - MoHawk

\$1,325.00
\$1,740.00

Note: Not legal for sale or use on pollution controlled motor vehicles.